



Satellite Laser communication

Using laser beam as a carrier to transmit image, voice, signal and other information in space.

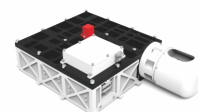
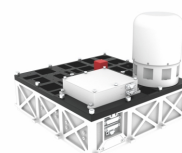
SSLC series products has the advantages of high transmission rate, strong anti-interference ability, small size of system terminal, light weight and low power consumption, which can greatly reduce the dependence of satellite constellation system on the ground network, thus reducing the construction number and construction cost of ground signal gateway stations. Expand the coverage area and achieve global TT&C network.

Key features

Strong anti-interference ability	High reliability	Cost-effective
High transmission rate	Low power consumption, small size	

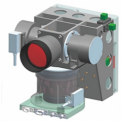
SSLC01

Communication System	BPSK
Communication Distance	Larger than 4500km
Communication Rate	62.5Mbps to 1Gbps
Transmitting power	1W
Emission Beam Dispersion Angle	108urad
Field of Regard	Azimuth : -175° to +175° Elevation : -25° to +10°
Aperture Diameter	33mm
Power	91W
Mass	9.3kg
Envelop	Electrical System : 244.04×169.93×149.43mm Optical System : 250.44×240.26×76.99mm



SSLC02

Communication System	QPSK
Communication Distance	Larger than 5000km
Communication Rate	321.5Mbps to 5Gbps
Transmitting power	3W
Emission Beam Dispersion Angle	65urad
Field of Regard	Azimuth : -175° to +175° Elevation : -45° to +5°
Aperture Diameter	50mm
Power	122W
Mass	12kg
Envelop	Electrical System : 244.04×169.93×149.43mm Optical System : 200.14×155.34×147.89mm



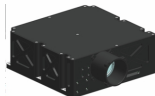
SSLC03

Communication System	OOK
Communication Distance	Larger than 1500km
Field of Regard	Uplink : 1.25Mbps to 10Mbps Downlink : 321.5Mbps to 10Gbps
Transmitting power	1W
Emission Beam Dispersion Angle	105urad
Field of Regard	Azimuth : -0.35° to +0.35° Elevation : -0.35° to +0.35°
Aperture Diameter	32mm
Power	43W
Mass	3.2kg
Envelop	Body System : 219.8×180.1×80.2mm Optical fiber amplifier : 100×100×25.2mm



SSLC04

Communication System	OOK
Communication Distance	Larger than 1500km
Field of Regard	Uplink : 1.25Mbps to 10Mbps Downlink : 321.5Mbps to 40Gbps
Transmitting power	3.2W
Emission Beam Dispersion Angle	105urad
Field of Regard	Azimuth : -0.35° to +0.35° Elevation : -0.35° to +0.35°
Aperture Diameter	32mm
Power	120W
Mass	4kg
Envelop	Electrical System : 272×185×40mm Optical System : 175×180×67mm



SSLC05

Communication System	OOK
Communication Distance	Larger than 1500km
Field of Regard	Uplink : 1.25Mbps to 10Mbps Downlink : 321.5Mbps to 60Gbps
Transmitting power	4.8W
Emission Beam Dispersion Angle	105urad
Field of Regard	Azimuth : -0.35° to +0.35° Elevation : -0.35° to +0.35°
Aperture Diameter	32mm
Power	150W
Mass	4.5kg
Envelop	Electrical System : 272×185×40mm Optical System : 175×187×87mm

